

Apt 93 Meadow Court Hackness Road, Chorlton Green, Manchester, M21 9HH



JP&Brimelow
ESTATE AGENTS

Offers In The Region Of £185,000

 1  1  1  D

VIDEO TOUR AVAILABLE A well-presented ONE DOUBLE BEDROOMED, second floor apartment situated in this highly popular purpose-built development in Chorlton off Kingshill Road. Set in well-maintained landscaped gardens in this fantastic residential location. Within walking distance to all of Chorlton Green's amenities on Beech Road, Chorlton Nature Reserve and Chorlton Centre with the Metrolink station in either Stretford or Chorlton giving you access into the city centre and Manchester International Airport. The accommodation is well-planned throughout and comprises a communal entrance hallway, private entrance hall, a good-sized lounge/dining room leading to a fitted kitchen, a double bedroom and a white three-piece bathroom. The apartment benefits from being warmed by gas fired central heating, off road parking and well-kept communal gardens.





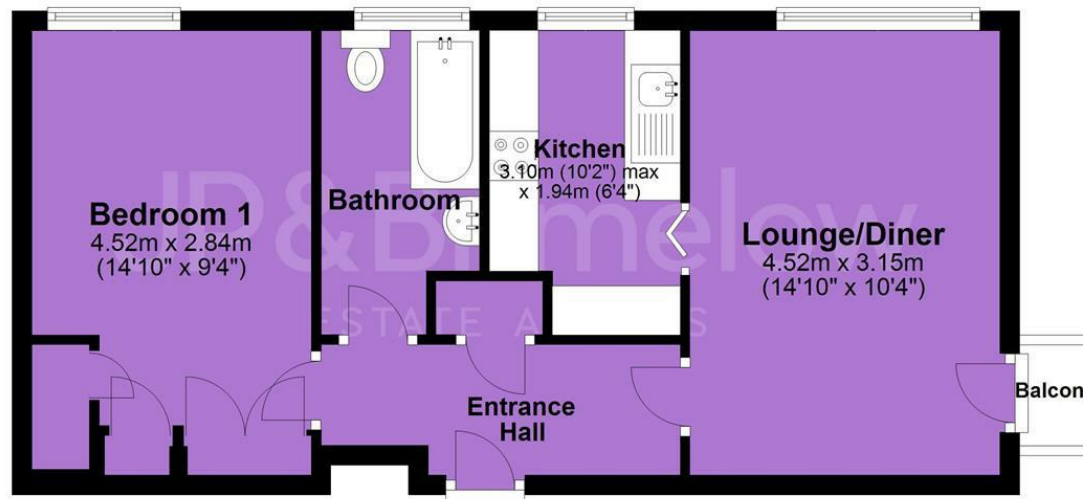
EPC Chart

Energy Efficiency Rating		Current	Potential
Very energy efficient - lower running costs			
(92 plus)	A		
(81-91)	B		
(69-80)	C		74
(55-68)	D	57	
(39-54)	E		
(21-38)	F		
(1-20)	G		
Not energy efficient - higher running costs			
England & Wales		EU Directive 2002/91/EC	



Tenure: **Leasehold** Council Tax Band: **A**

Second Floor



JP & Brimelow Estate Agents Ltd
 430 Barlow Moor Road, Manchester, M21 8AD
 Tel: 0161 8822233
 E: sales@jpbrimelow.co.uk www.jpandbrimelow.co.uk



JP & Brimelow
 ESTATE AGENTS

NOTICE: JP & Brimelow Estate Agents Ltd for themselves and for the vendors or lessors of this property whose agents they are give notice that:

- (i) the particulars are set out as a general outline only for the guidance of intending purchasers or lessees, and do not constitute, nor constitute part of, an offer or contract;
- (ii) all descriptions, dimensions, references to the condition and necessary permissions for use and occupation, and other details are given in good faith and are believed to be correct but any intending purchasers or tenants should not rely on them as statements or representations of fact but must satisfy themselves by inspection or otherwise as to the correctness of each of them;
- (iii) no person in the employment of JP & Brimelow Estate Agents Ltd has any authority to make or give any representation or warranty whatever in relation to this property.

jpandbrimelowestateagents

@jpandbrimelow